

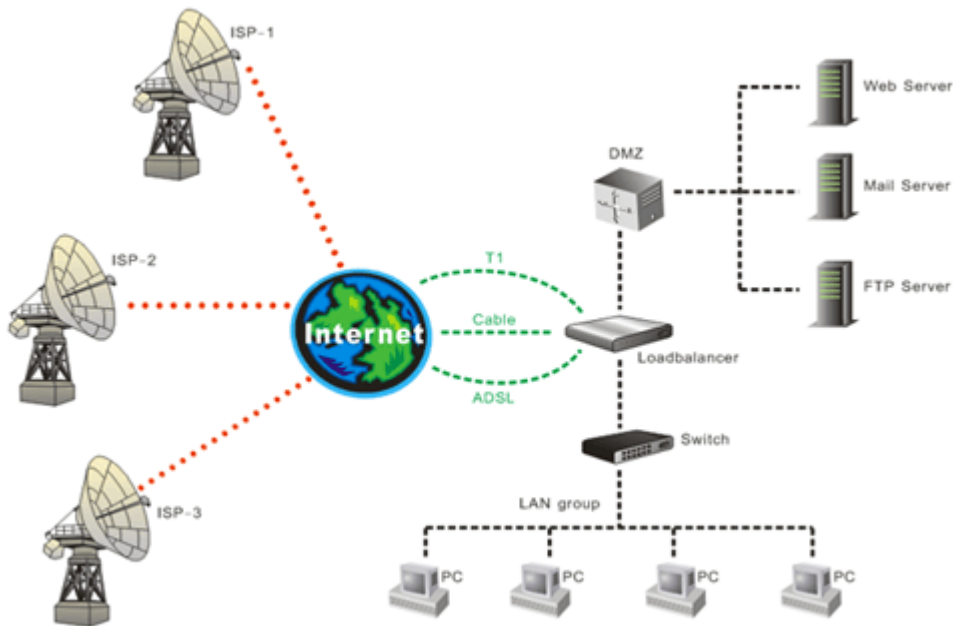


LB-04/1

Enterprise / ISP Grade Load Balancer, 4 WAN + 1 LAN
(Outbound & Inbound Load Balance)

Today, fast and reliable internet access is a basic requirement for any business, including Enterprise, and ISP. Enterprise with a single ISP line, however, runs the risk of business discontinuity should the line fail. With the proliferation of broadband and increased varieties of WAN connection choices, Enterprise with Multiple WAN links has gained increased acceptance. PheeNet LB-04/1, the intelligent WAN Load Balancer is a perfect solution for Enterprise/ ISP need. It aggregates different WAN links (from different ISPs) to provide load balancing and fault tolerance for those links to ensure business WAN Link quality and stability.

APPLICATION



Features

1. Throughput 50Mbps, Connection 22,000
2. WAN Link Trunking
3. WAN Fault Tolerance
4. Bandwidth Management And QoS
5. Multi-homing
6. Firewall, DMZ, and DoS Protection
7. High Performance Cache, Intelligent NAT, and DHCP
8. Easy Management
9. An Integrated Solution

Specification

Industrial Standard		
Standard	IEEE802.3 10BaseT Ethernet IEEE802.3u 100BaseTX Fast Ethernet	
Interface	WAN:4×10/100Base-TX Ethernet port LAN:1 x10/100Base-TX with Automatic MDI/MDIX port	
Load Balancer / Router Features		
Load Balance	Algorithm	By traffic By round-robin /weight round-robin (RR/WRR) Fixed
	Outbound management	Policy by IP / IP range Policy by subnet Policy by IP group/service group By schedule
	Inbound	Multi-homing Build in DNS By Fixed Link By traffic
QoS	Max Bandwidth Guarantee Bandwidth By service By port By source IP By destination IP Priority By MAC address	
Firewall	Policy based Firewall Service rule IP rule IP group Time rule Time group Service group DoS	
NAT	Virtual server Port Forwarding IP Routing Multi-DMZ / DMZ Subnet	
VPN	PPTP & IPSec Pass Through PPTP Client	
Protocol	TCP/IP, HTTP, DHCP, PPP, UPAP, PPPoE, Multi-session	

	PPPoE, ICMP, ARP Proxy, PPTP
Management & Security	Access Control by Group Session Control Support with H.323 VoIP products SNMP UPnP Port Scan Web-based Email alert of WAN fail Firmware upgrade via HTTP or TFTP
Log	System Log Bandwidth log Load balance log Syslog push Email push FTP push
Hardware	
CPU	Intel IXP 425 533MHz
RAM	64Mb
Flash Memory	16Mb
Environment	Operating Temperature 0 °C ~ 70 °C Storage Temperature 0 °C ~ 85 °C Operating Humidity 10% to 80% Non-Condensing Storage Humidity 5% to 90% Non-Condensing
Power Supply	Adaptor Input: 100-240V 50-60HZ Output: 12V/1.5A
LED Indicators	Power, WAN, LAN
Dimensions	230 x 150 x 40 (mm) (Width x Depth X Height)
Certificate	CE,FCC

PheeNet Technology Corp.

Rm. 3, 20F, NO. 79, Hsin Tai Wu Rd., Sec. 1,
 Hsi-Chih, Taipei, Taiwan
<http://www.pheenet.com>
 TEL: 886-2-26982011 FAX: 886-2-26981421

